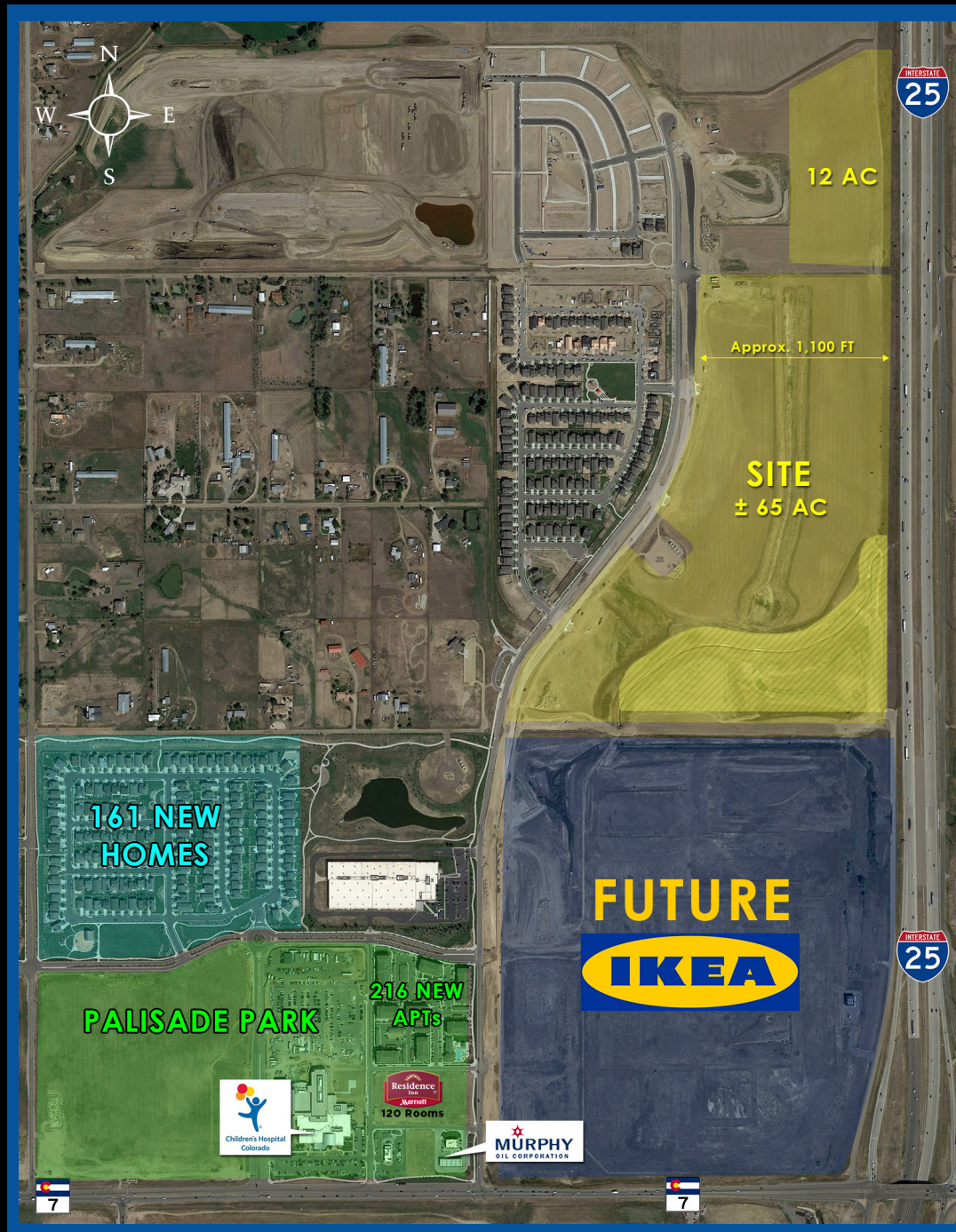


PALISADE NORTH

NWC Highway 7 & I-25, Broomfield, Colorado

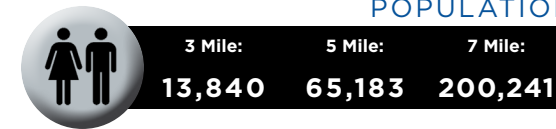


PROPERTY OVERVIEW:

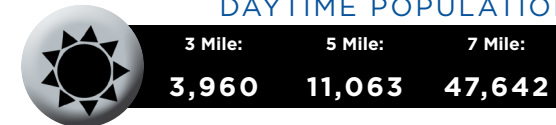
- 77 AC development site
- Great location for retail, showroom, hospitality, distribution
- 50 ft LED monument sign
- 3 additional I-25 monument signs

DEMOGRAPHICS

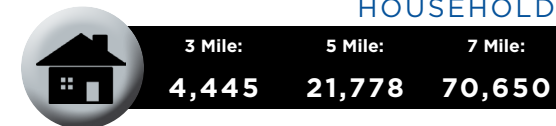
POPULATION



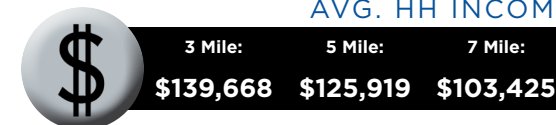
DAYTIME POPULATION



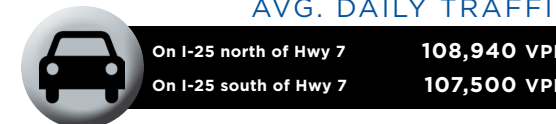
HOUSEHOLDS



AVG. HH INCOME



AVG. DAILY TRAFFIC



For more information:

Scott Crosbie

303 881 2211

scrosbie@creginc.com

Forrest Hunt

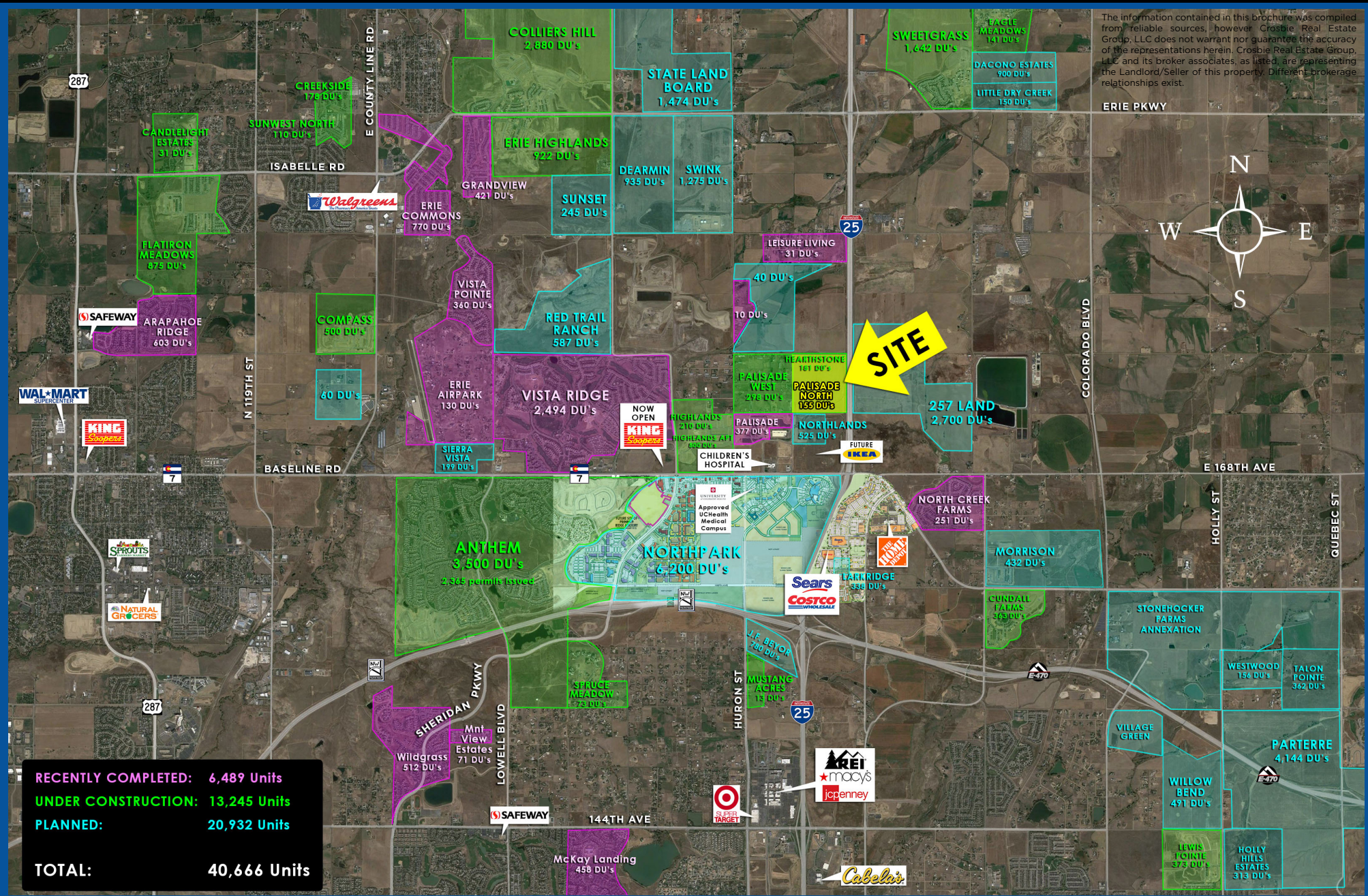
303 597 6500

fhunt@creginc.com

PALISADE NORTH

NWC Highway 7 & I-25, Broomfield, Colorado

The information contained in this brochure was compiled from reliable sources, however Crosbie Real Estate Group, LLC does not warrant nor guarantee the accuracy of the representations herein. Crosbie Real Estate Group, LLC and its broker associates, as listed, are representing the Landlord/Seller of this property. Different brokerage relationships exist.



RECENTLY COMPLETED: 6,489 Units
UNDER CONSTRUCTION: 13,245 Units
PLANNED: 20,932 Units
TOTAL: 40,666 Units

Scott Crosbie 303 881 2211 scrosbie@creginc.com
Forrest Hunt 303 597 6500 fhunt@creginc.com

Disclosure Agreement

