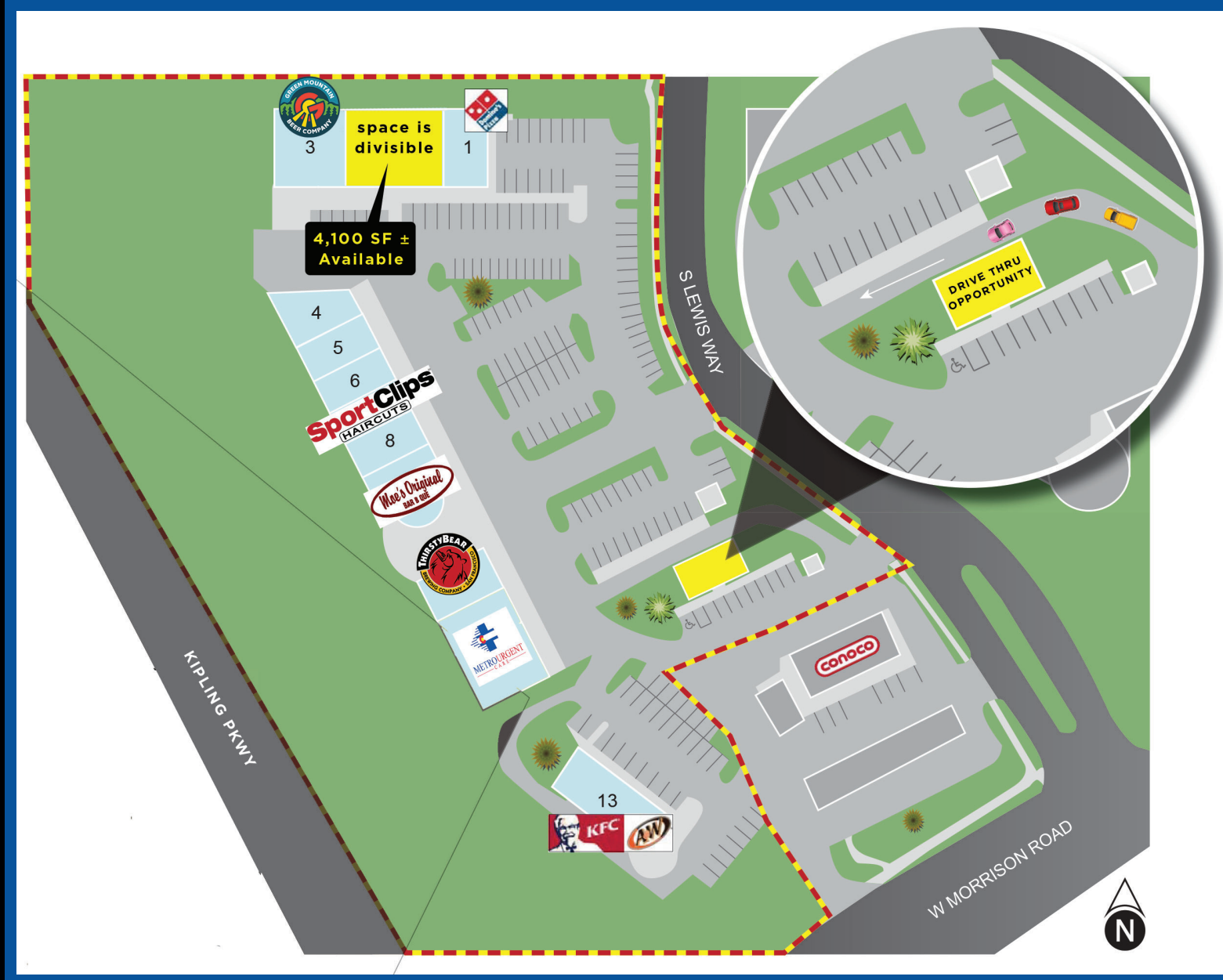


NORTH BEAR CROSSING

2585-2599 S Lewis Lake, Lakewood, CO 80227



Rich Hobbs

o. 720-287-6865

c. 303-594-4043

hobbs@creginc.com

Eli Boymel

o. 720-287-6862

c. 303-506-4094

eboymel@creginc.com

PROPERTY OVERVIEW:

- Build-to-suit or ground lease with drive-thru option
- 4,100 SF ± (divisible) retail space for lease

FEATURES:

- Signage facing Kipling Parkway
- Strong demographics
- Rapidly growing trade area
- High traffic counts

See the space now!



CROSBIE

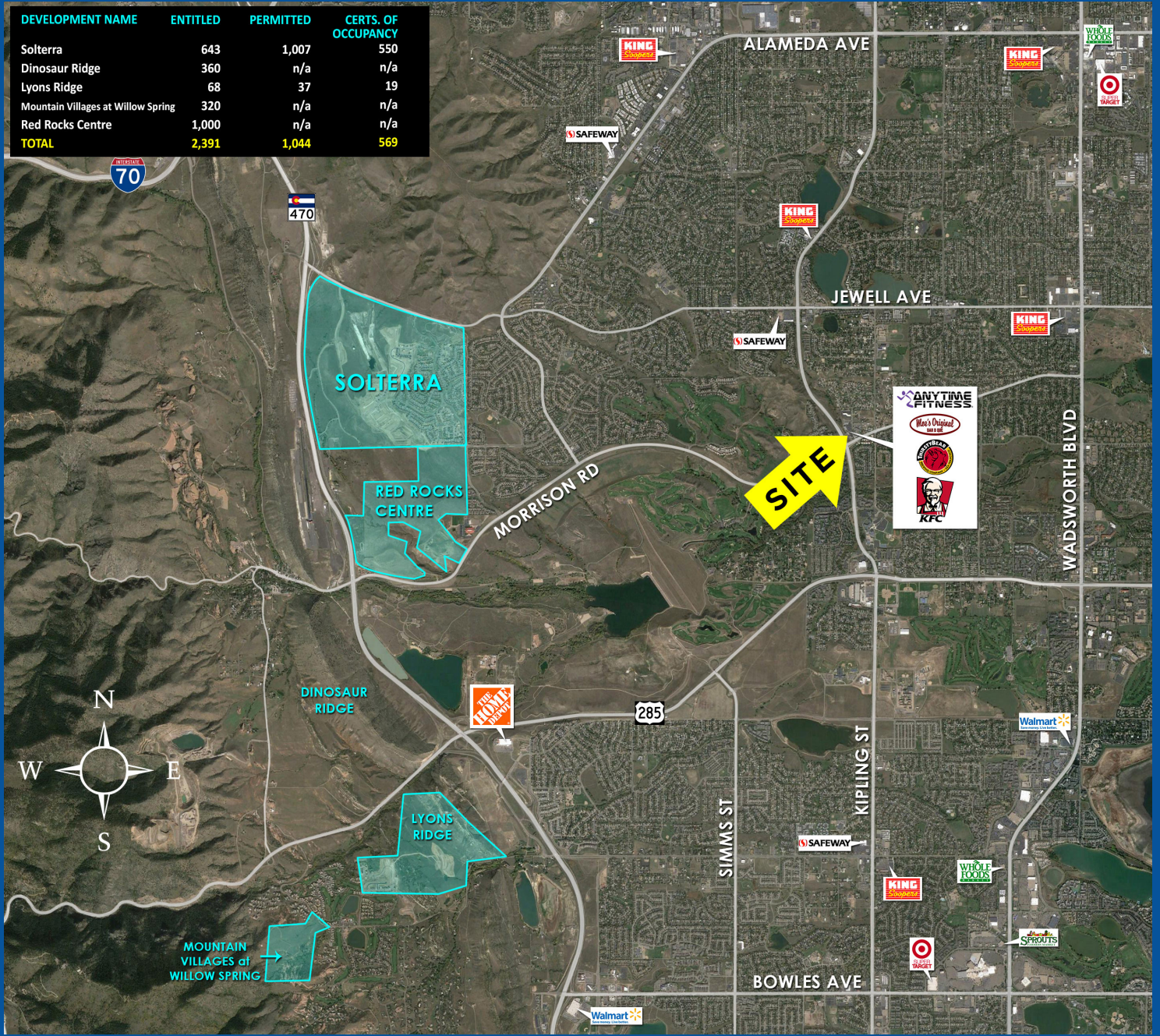
REALESTATE

GROUP

NORTH BEAR CROSSING

2585-2599 S Lewis Lake, Lakewood, CO 80227

DEVELOPMENT NAME	ENTITLED	PERMITTED	CERTS. OF OCCUPANCY
Solterra	643	1,007	550
Dinosaur Ridge	360	n/a	n/a
Lyons Ridge	68	37	19
Mountain Villages at Willow Spring	320	n/a	n/a
Red Rocks Centre	1,000	n/a	n/a
TOTAL	2,391	1,044	569



DEMOGRAPHICS

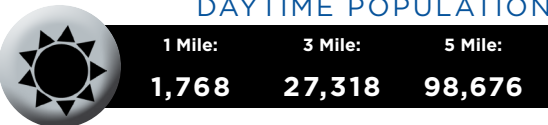
POPULATION



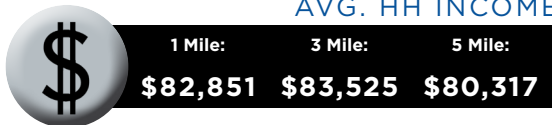
HOUSEHOLDS



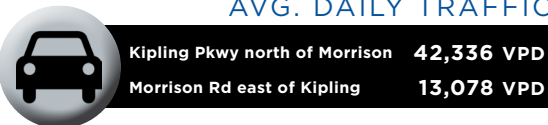
DAYTIME POPULATION



AVG. HH INCOME



AVG. DAILY TRAFFIC



The information contained in this brochure was compiled from reliable sources, however Crosbie Real Estate Group, LLC does not warrant nor guarantee the accuracy of the representations herein. Crosbie Real Estate Group, LLC and its broker associates, as listed, are representing the Landlord/Seller of this property. Different brokerage relationships exist.

Disclosure Agreement



Rich Hobbs
o. 720-287-6865
c. 303-594-4043
hobbs@creginc.com

Eli Boymel
o. 720-287-6862
c. 303-506-4094
eboymel@creginc.com

