

JEFFERSON VILLAGE

NEC C-470 & Kipling Street, Littleton, CO



PROPERTY OVERVIEW:

- ◇ Available: 1,400 SF
- ◇ Close Proximity to C-470
- ◇ Call Listing Agent for pricing and terms
- ◇ Excellent Tenant Mix

JOIN:



DEMOGRAPHICS

POPULATION



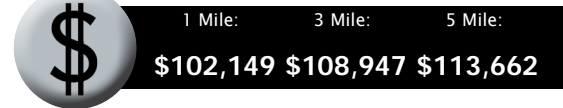
DAYTIME POPULATION



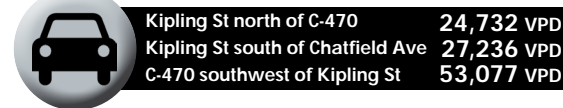
HOUSEHOLDS



AVG. HH INCOME



AVG. DAILY TRAFFIC



For more information, contact:

Rich Otterstetter

o. 720 287 6860

c. 303 883 1003

richo@creginc.com

Adam Rubenstein

o. 720 598 6050

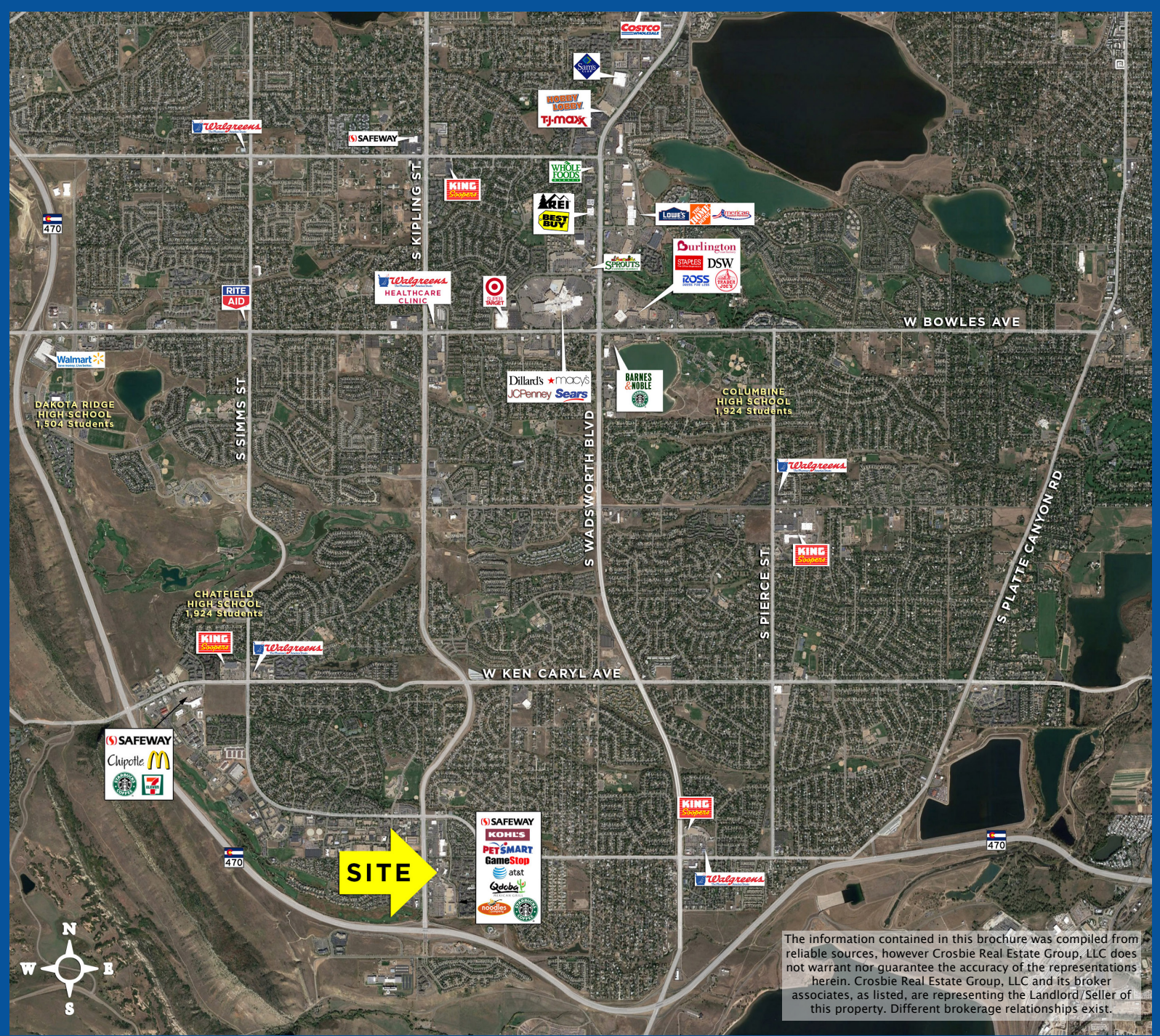
c. 303 257 1481

adam@creginc.com



JEFFERSON VILLAGE

NEC C-470 & Kipling Street, Littleton, CO



The information contained in this brochure was compiled from reliable sources, however Crosbie Real Estate Group, LLC does not warrant nor guarantee the accuracy of the representations herein. Crosbie Real Estate Group, LLC and its broker associates, as listed, are representing the Landlord/Seller of this property. Different brokerage relationships exist.



Rich Otterstetter
720 287 6860
richo@creginc.com

Adam Rubenstein
720 598 6050
adam@creginc.com



Disclosure Agreement

