

# RETAIL PAD FOR SALE

SEC Highway 66 & I-25 | 13785 Pacific Circle, Mead, CO



## PROPERTY OVERVIEW:

- 1.14 AC  
(49,473 SF)  
Retail pad  
site for sale
- Rough  
graded
- Great  
highway  
visibility
- High growth  
and under  
served trade  
area

For more information,  
contact:

**Forrest Hunt**

303 597 6500

[fhunt@creginc.com](mailto:fhunt@creginc.com)



## DEMOGRAPHICS

### POPULATION



1 Mile:	3 Mile:	5 Mile:
716	7,391	35,491

### DAYTIME POPULATION



1 Mile:	3 Mile:	5 Mile:
755	3,673	9,708

### HOUSEHOLDS



1 Mile:	3 Mile:	3 Mile:
265	2,626	12,314

### AVG. HH INCOME



1 Mile:	3 Mile:	5 Mile:
\$91,342	\$102,312	\$114,503

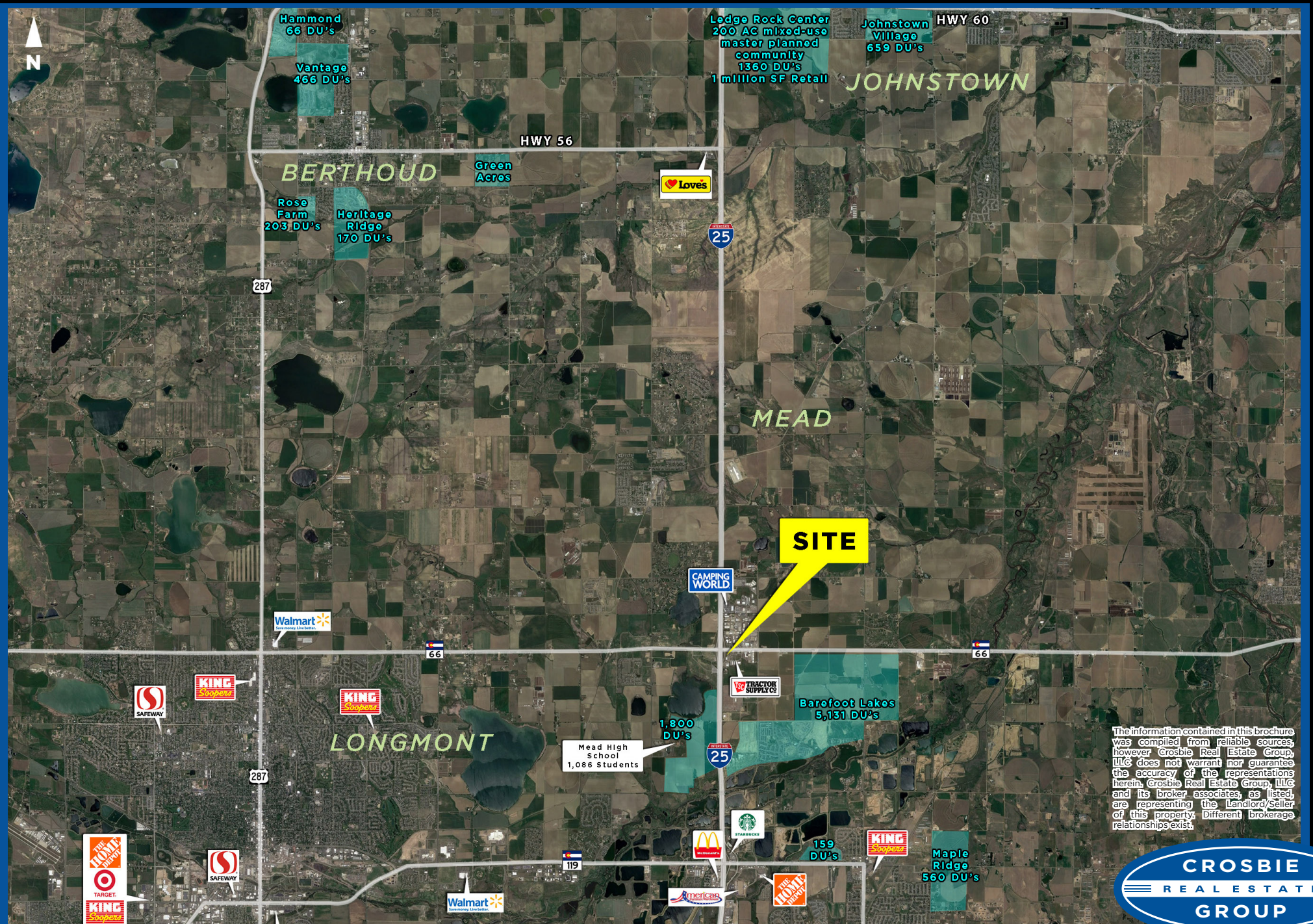
### AVG. DAILY TRAFFIC



On Hwy 66 east of I-25	22,575 VPD
On I-25 south of Hwy 66	101,783 VPD

# RETAIL PAD FOR SALE

SEC Highway 66 & I-25 | 13785 Pacific Circle, Mead, CO



The information contained in this brochure was compiled from reliable sources; however, Crosbie Real Estate Group, LLC does not warrant nor guarantee the accuracy of the representations herein. Crosbie Real Estate Group, LLC and its broker associates, as listed, are representing the Landlord/Seller of this property. Different brokerage relationships exist.

